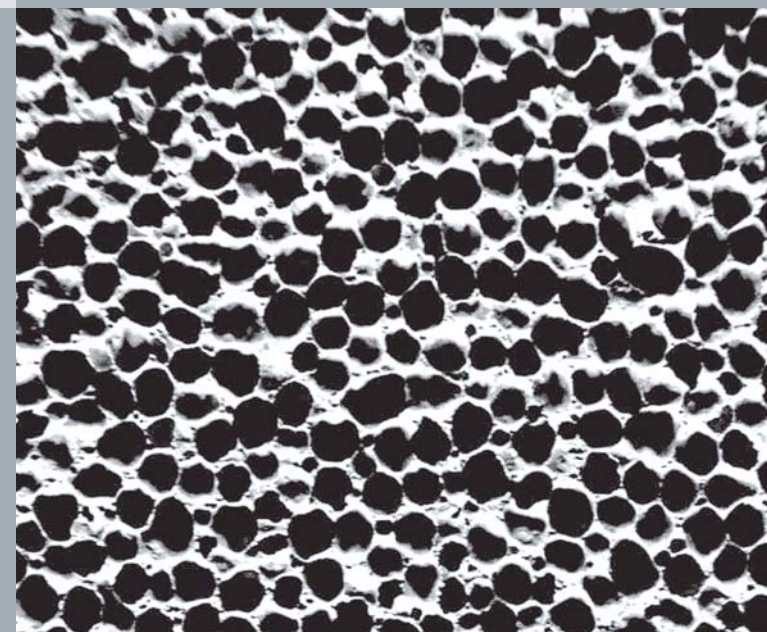


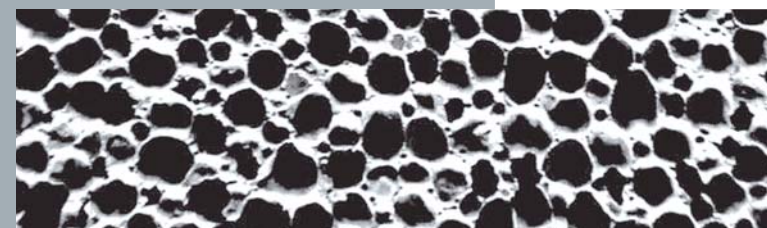
HEAD OFFICE

SCHLENK METALLIC PIGMENTS GMBH
BARNSDORFER HAUPTSTRASSE 5
D-91154 ROTH / GERMANY
TEL.: ++49 (9171) 808-0
FAX: ++49 (9171) 808-200
E-MAIL: pigments@schlenk.de
INTERNET: www.schlenk.de



Aluminium Flakes

For Autoclaved Aerated Concrete
and other Technical Applications



Technical Specifications of Powders

	Bulk density (g/cm ³)	Sieve residue 45 µm (%)	D ₅₀ (µm)
7002	0,18 - 0,29	70 - 80	90 - 120
7004	0,16 - 0,20	60 - 70	70 - 85
7304*	0,16 - 0,20	60 - 70	70 - 85
7008	0,15 - 0,19	39 - 46	60 - 70
7009	0,13 - 0,17	25 - 32	40 - 50
7010	0,13 - 0,17	max. 20	approx. 35
7310*	0,13 - 0,17	max. 20	approx. 35
77012	0,14 - 0,16	3 - 6	approx. 30
77312*	0,14 - 0,16	3 - 6	approx. 30
77013	0,12 - 0,16	max. 2	approx. 25
77313*	0,12 - 0,16	max. 2	approx. 25
4102	0,11 - 0,16	25 - 35	approx. 45
4402*	0,11 - 0,16	25 - 35	approx. 45
4307*	0,13 - 0,17	18 - 25	approx. 35
8010	0,11 - 0,14	max. 15	approx. 30
8610*	0,11 - 0,14	max. 15	approx. 30

*retarded

Technical Specifications of Pastes

	Sieve residue 45 µm (%)	D ₅₀ (µm)
Aquapor® 100 series	70 - 85	70 - 85
Aquapor® 300 series	55 - 70	60 - 70
Aquapor® 400 series	45 - 55	50 - 60
DEG/150 series	70 - 85	70 - 85
DEG/350 series	55 - 70	60 - 70
DEG/450 series	45 - 55	50 - 60
Aquapor® 4000 series	max. 50	35 - 45
Aquapor® 1000 series	max. 35	35 - 45
Aquapor® 3000 series	max. 20	20 - 30
Aquapor® 8000 series	max. 15	17 - 23
Aquapor® 7000 series	max. 12	15 - 20
Aquapor® 9000 series	max. 5	10 - 15
DEG/4500 series	max. 50	35 - 45
DEG/1500 series	max. 35	35 - 45
DEG/3500 series	max. 20	20 - 30
DEG/8500 series	max. 15	17 - 23
DEG/7500 series	max. 12	15 - 20
DEG/9500 series	max. 5	10 - 15

Solid content – Standard: 70 ± 2%



The chart shows a selection of aluminium products for the aerated light weight concrete as well as for the chemical industry.