

Rohrkabelschuhe ohne Isolation

Cosses à sertir en tube

Uninsulated tube terminals

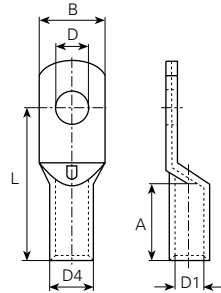
Werkstoff:
E-CU sn = Elektrolytkupfer verzinkt

Matière:
E-CU sn = cuivre électrolytique étamé

Material:
E-CU sn = tin-plated electrolytic copper

Bestellbeispiel:
Exemple de commande:
Example of order:

3392A



mm ² (AWG)	für Bolzen pour borne for stud	Artikel-Nr. Numéro d'article Part-No.	øD mm	øD1 mm	B mm	L mm	A mm	øD4 mm	Stand- Packg.	Werkzeuge Outils Tools
0,5-0,75 (22-20)	M3	3392A	3.2	1.3	6	12	6	2.8	500	
	M3.5	3393A	3.7	1.3	6	12	6	2.8	500	
	M4	3394A	4.3	1.3	6.5	13	6	2.8	500	
	M5	3396A	5.3	1.3	7.5	14	6	2.8	500	
1-1,5 (18-16)	M3	3397A	3.2	1.8	6	12	5.5	3.3	500	
	M4	3398A	4.3	1.8	6.5	13	5.5	3.3	500	
	M5	3399	5.3	1.8	7.5	14	5.5	3.3	500	
	M6	3400A	6.4	1.8	9	14	5.5	3.3	500	
2,5 (14)	M3.5	3401A	3.7	2.3	6.5	13	6	4	500	
	M4	3402A	4.3	2.3	7.5	14	6	4	500	
	M5	3403A	5.3	2.3	8.5	14	6	4	500	
	M6	3405A	6.4	2.3	9	15	6	4	500	
	M8	3406A	8.4	2.3	12	18	6	4	500	
4 (12)	M4	3402B	4.3	3	8.5	17	8	5	200	
	M5	3403B	5.3	3	9	17	8	5	200	
	M6	3405B	6.5	3	10	19	8	5	200	
	M8	3406B	8.5	3	14	22	8	5	200	
6 (10)	M4	3408A	4.3	3.5	8	17	9	5.5	200	
	M5	3409A	5.3	3.5	9	19	9	5.5	200	
	M6	3410A	6.4	3.5	11	19.5	9	5.5	200	
	M8	3411A	8.4	3.5	14	21	9	5.5	200	
	M10	3412A	10.5	3.5	16	23	9	5.5	200	
10 (8)	M4	3414A	4.3	4.5	12	22	10.5	7	100	
	M5	3415A	5.3	4.5	12	22	10.5	7	100	
	M6	3416A	6.4	4.5	12	23	10.5	7	100	
	M8	3417A	8.4	4.5	15	25.5	10.5	7	100	
	M10	3418A	10.5	4.5	18	27.5	10.5	7	100	
	M12	3419A	13.2	4.5	20	28.5	10.5	7	100	
16 (6)	M5	3420A	5.3	5.5	12	24.5	12	8.5	100	
	M6	3421A	6.4	5.5	12	25.5	12	8.5	100	
	M8	3422A	8.4	5.5	15	28	12	8.5	100	
	M10	3423A	10.5	5.5	18	30	12	8.5	100	
	M12	3424A	13.2	5.5	20	31	12	8.5	100	
25 (4)	M5	3425A	5.3	7	14	26.5	13	10	100	
	M6	3426A	6.4	7	14	27.5	13	10	100	
	M8	3427A	8.4	7	15	30	13	10	100	
	M10	3428A	10.5	7	18	32	13	10	100	
	M12	3429A	13.2	7	20	33	13	10	100	